

Christmas SPAG activities



Name.....

Juggling with words

Read the words in the Christmas sack. How many sentences can you make using these words? You don't have to use all the words in each sentence.



my

at

carol

a

Christmas

friend

lovely

is

singing

practising

house

the

Creating Adverbs

Adverbs are often made by adding **ly** to an adjective.

If the adjective ends in **y**, the **y** is changed to an **i** before adding **ly**.

Example:

adjective

adverb

A **quick** run.

He ran **quickly**.

Write a short sentence for each of the actions . Add **ly** to the adjective (the word in bold) to make your adverb.

Phrase with adjective	Use the adverb
A silent prayer	The children prayed silently .
an excited giggle	
A sudden flash	
a bright , shining star	

Subordinate Clauses

Subordinate clauses are used to add more information to sentences.


Example:


subordinate clause, main clause

The Christmas cake, which smelt delicious, was baking in the oven.

Use commas to before and after the main clause.

Can you add more information to the sentences below by choosing the best subordinate clause to add where you see this sign ^ ?

	Santa's sleigh ^ flew swiftly through the sky.

	The little girl ^ reached out towards Santa.

Subordinate Clauses

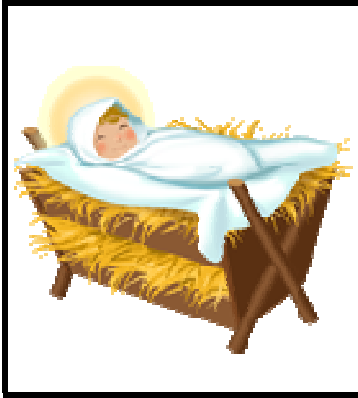
who was wagging his tail

who was only 3 years old

which was full of presents

which had blue wheels

More Subordinate Clauses



Baby Jesus ^ lay sleeping in a manger.



The snowman ^ stood proudly in the snow.



The boy ^ was singing lovely carols.



The Christmas tree ^ was topped by a shiny gold star.

Subordinate Clauses

which was decked with colourful
baubles

who was wearing a green scarf

which was orange and blue

who was only a few hours old

whose name was Emil

Nominative, comparative, superlative

An adjective can have three different degrees.

nominative



tall

comparative



taller

superlative



tallest

The three degrees can be made by altering the ending of the adjective.

Complete the table below to show whether the adjectives are nominative, comparative or superlative.

The first one has been done for you.

	nominative	comparative	superlative
brighter			
bright			
brightest			
jolliest			
jollier			
jolly			
shiny			
shiniest			
shinier			

Christmas Compound Words

A compound word is made when two words are joined to form a new word.

*example: **wintertime** is made of **winter** + **time**.*

Can you find the compound words in the word search below?

d	e	o	z	c	v	l	z	l	q	s	a
i	i	p	s	a	e	j	g	m	s	a	m
s	t	e	f	n	v	n	s	w	n	f	c
u	f	p	h	d	e	u	n	x	o	r	i
g	i	p	r	l	r	t	o	x	w	u	p
a	r	e	e	e	g	c	w	w	m	i	i
r	e	r	i	l	r	r	b	i	a	t	n
p	w	m	n	i	e	a	a	x	n	c	e
l	o	i	d	g	e	c	l	v	g	a	c
u	o	n	e	h	n	k	l	c	j	k	o
m	d	t	e	t	d	e	b	d	d	e	n
r	t	s	r	u	m	r	e	b	h	g	e

snowman	evergreen
reindeer	snowball
pinecone	candlelight
fruitcake	firewood
nutcracker	workshop
peppermints	sugarplum

A Christmas Caper

Read the passage below and on the next page. There are two things the author could have done to improve it. Can you work out what they are?

The tree was looking lovely; Sophie and Mum had spent all afternoon hanging baubles and tinsel on the tree, the angel that Sophie had made at school was sitting proudly right at the top. All that was missing were the lights and that was Dad's job.

Are you sure you know what you're doing said Mum.

Of course I do said Dad.

Please be careful said Sophie That tree has taken us all afternoon.

Dad carefully got the step ladders into the right place and slowly draped the lights around the tree, trying hard not to knock the decorations. As Dad was stretching across the tree, one of the baubles came off and got stuck to his glasses.

Oh Dad said Sophie You do look silly. As he turned to see what she was laughing at, the golden baubles dangled and bobbed on his cheek.

Yes I will be careful said Dad under his breath.

Simon, you look quite ridiculous said Mum.

There said Dad as he finished draping the last row of lights on the tree.

He carefully climbed down from the step ladder.

He will be careful said Sophie quietly. Won't he.

As Dad walked backwards away from the tree he admired his handiwork.

I'm very good at this sort of thing said Dad. He didn't notice that his foot had got caught around the wire of the lights.

Stop said Mum. You're going to pull our tree over.

Dad said Sophie.

He stopped as he heard what they were saying but not before the tree started to wobble. It wobbled and wobbled and wobbled. Sophie's angel was flung off the top of the tree, sailed through the air and landed with a plonk, right on top of Dad's head. With the bauble still hanging from his glasses, Dad did look quite silly.

You are the silliest Dad ever said Sophie.

Did you work out how this passage could be improved?

The author has forgotten to put in any speech marks?

Can you put them in?

*The second thing they have done wrong is to keep using the word **said**, here is a list of words that might make the piece more interesting to read.*

Can you put them in where they might go?

boasted	giggled	screamed	asked
laughed	scolded	replied	sighed
shouted	pleaded	muttered	whispered

Onomatopoeia Hunt

Onomatopoeia is a word that mimics the sound of the object or action it refers to. When you pronounce a word, it will mimic its sound.

Example:

I can hear the **jingle-jangle** of sleigh bells.

jingle-jangle mimics the sound of the sleigh bells.

Can you add more information to the sentences below by choosing the best subordinate clause to add where you see this sign ^ ?

buzz	crackle	achoo	ticktock	gobble
argh	bump	fizz	hiccup	jingle
zoom	whizz	squeak	snip	whoop

j	w	h	o	o	p	b	r	o	u	h	t
m	h	x	r	b	u	z	z	o	u	t	i
g	i	a	f	u	j	i	n	g	l	e	c
o	z	o	o	m	n	b	e	c	a	c	k
b	z	c	k	p	a	s	n	i	p	r	t
b	l	i	f	l	a	q	u	i	t	a	o
l	c	h	i	c	c	u	p	a	w	c	c
e	o	z	z	y	h	e	k	n	i	k	k
k	i	p	z	y	o	a	r	g	h	l	s
m	p	o	e	i	o	k	w	i	n	e	o